



CORPORATE PROFILE



IT can create it.

Corporate Philosophy

- Business Domain** Everything related to information technology is our business domain.
- Corporate Culture** Places value on demonstration of personal individualism and skills.
- Role in Society** Use information technology rich in creativity to provide solutions that exceed customer demands, help customers realize dreams and ideals, and contribute to development of a prosperous society.

Corporate Slogan

IT can create it.

Use creative ideas to convert the limitless possibilities of IT into reality.

Keyware contributes to the furtherance of a prosperous, safe, and secure society through the latest in technology and conceptualization by providing services spanning the width from the creation of social infrastructure support systems to helpful services for day-to-day life.

Over the course of approximately 50 years, we at Keyware have been engaged in the creation of information systems for the support of social infrastructure in a variety of fields such as public agencies, transportation, telecommunications, financial services, medical services, logistics, and manufacturing. Based on a foundation of extensive industry-sector and operational expertise accumulated in the course of a substantial track record, and using a wide range of IT skills and various IT solutions, Keyware provides optimal solutions consistent with customer requirements across the entire system life cycle from management strategy formulation to the introduction, construction and operation of IT implementations.

IT solutions and services have become an indispensable part of social infrastructure for the support of corporations and people's day-to-day life. Moreover, customers' business environments and individual lifestyles have been changing along with the diversity of usage patterns and the variety and high speed of services brought on in recent years by the rapid proliferation of cloud computing and smart devices.

Keyware will swiftly respond to these changes in the environment and will constantly strive to enhance new services by employing the latest IT technology and creative thinking.

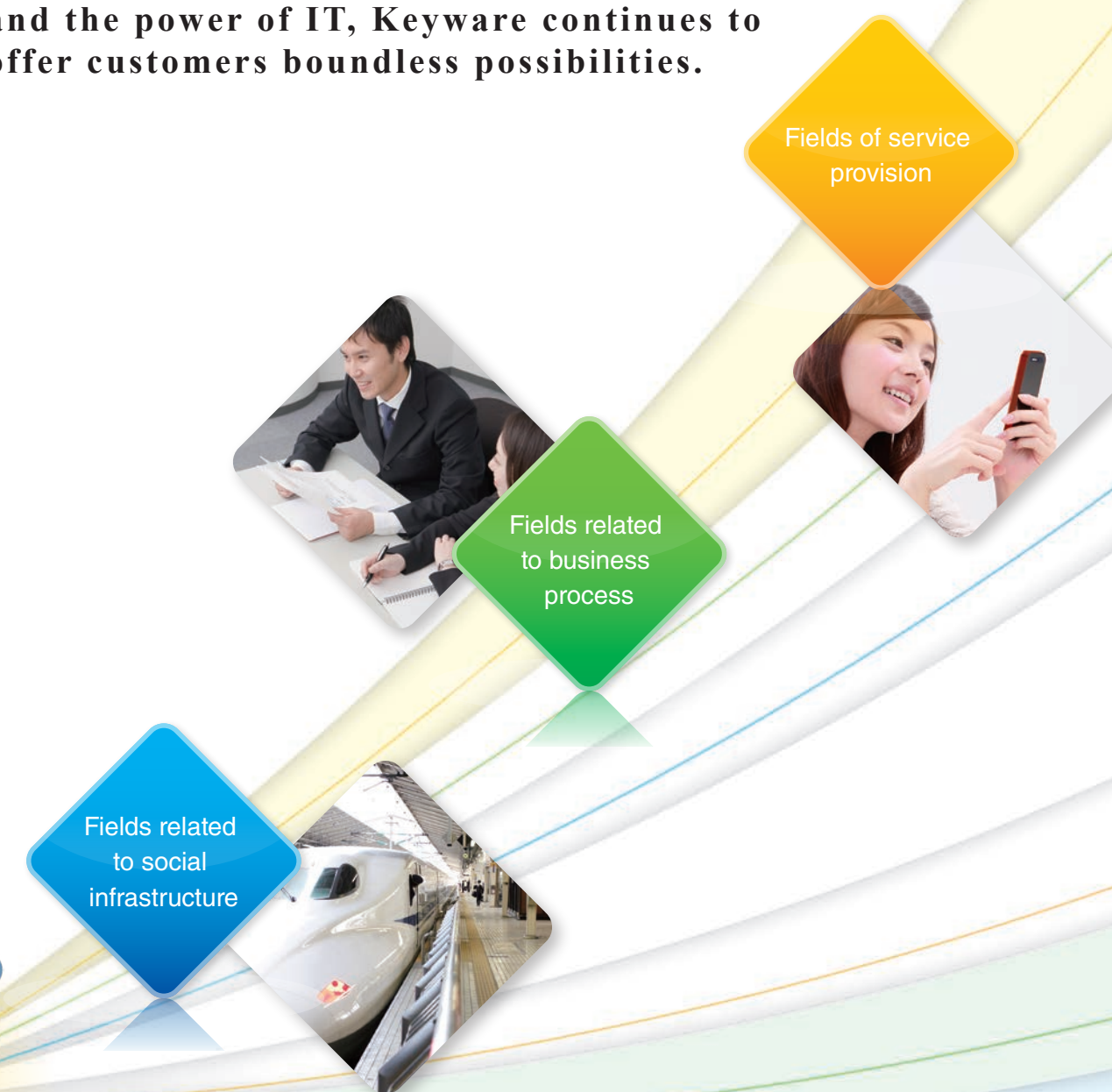
Keyware will continue as a reliable partner to its customers to contribute to the furtherance of a prosperous, safe, and secure society by providing high-quality solutions of high added value.

President & CEO

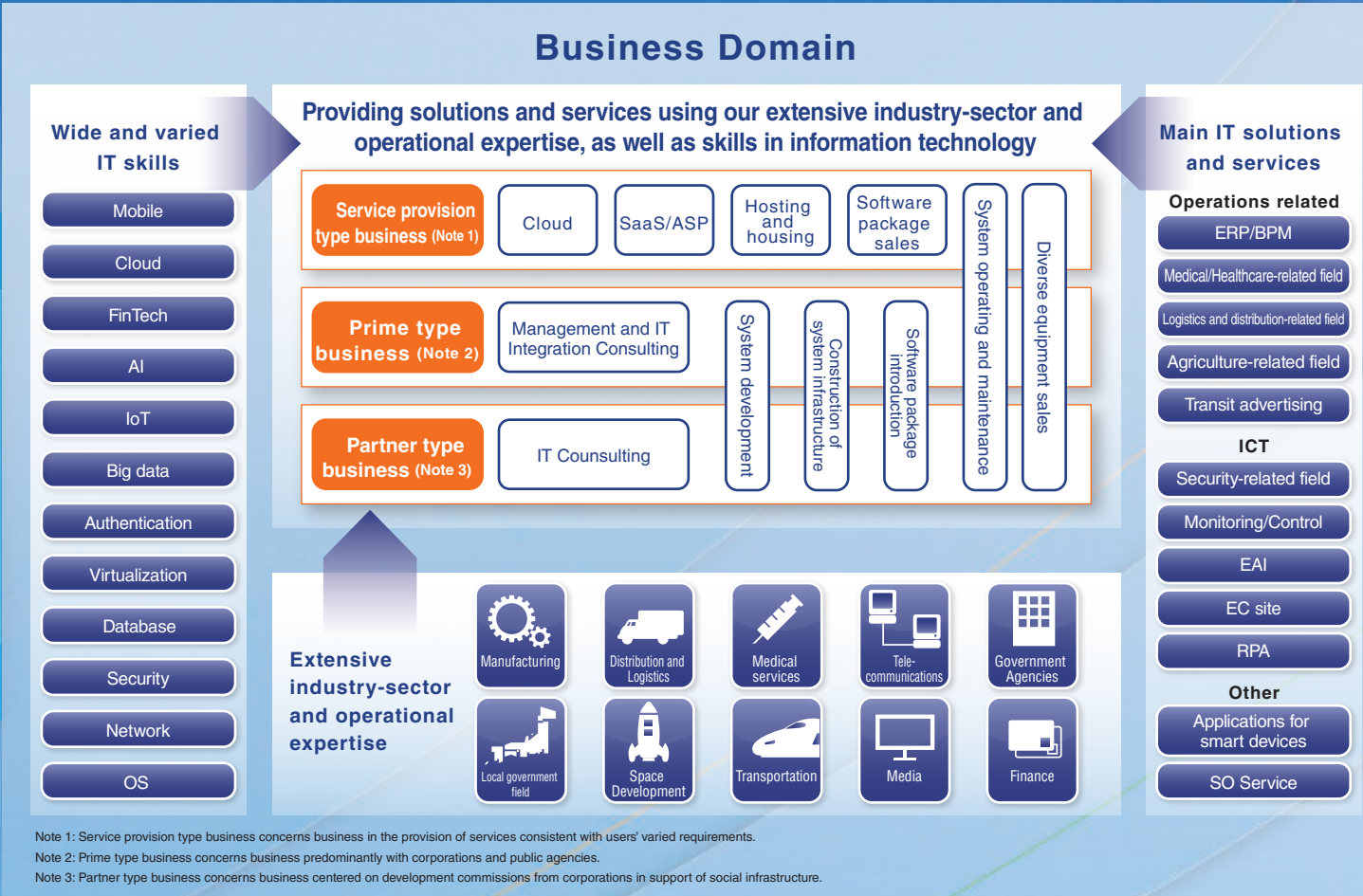
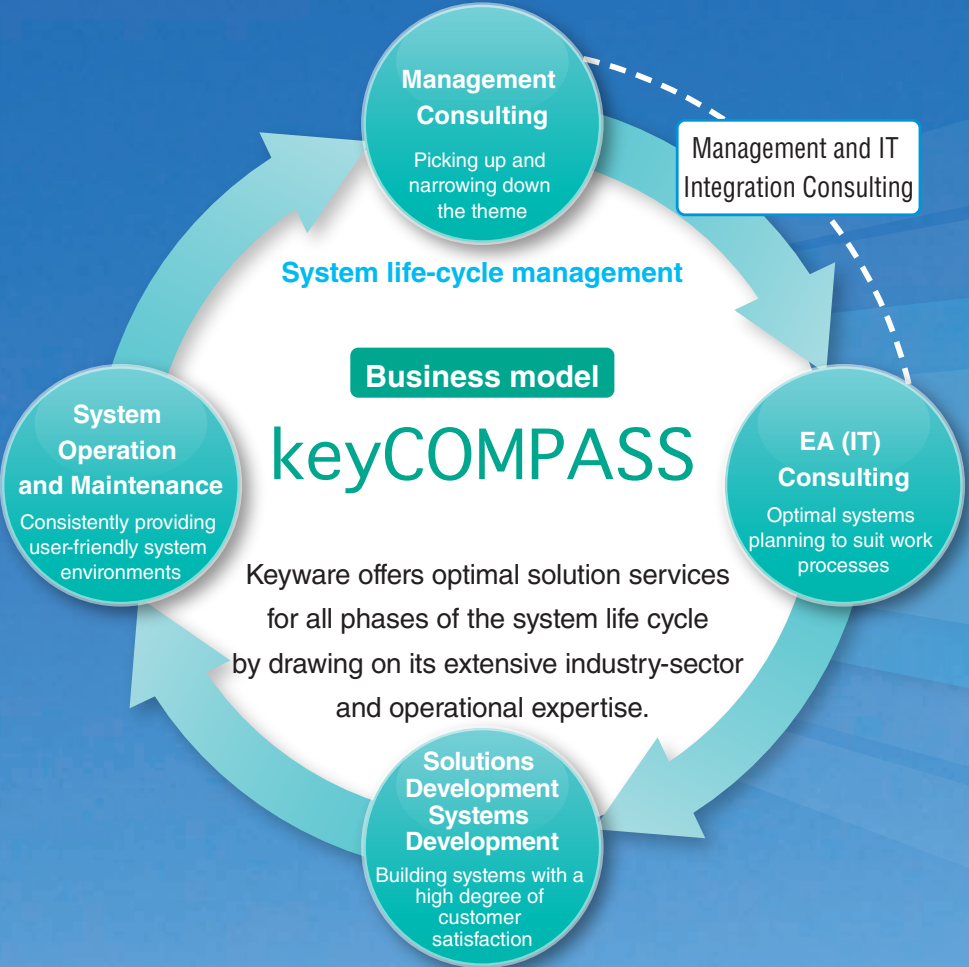
Masahiro Iwata

IT can create it.

Drawing on our creative conceptualization and the power of IT, Keyware continues to offer customers boundless possibilities.



Based on its keyCOMPASS business model, Keyware has been employing its extensive industry-sector and operational expertise, and a diversity of IT solutions, accumulated through a rich track record over many years, and thereby continuously provides customers with the key to new roads to success.



Fields related to business process

Keyware provides solutions and services that contribute to solving a diversity of problems encountered by corporations.

Various Solution Services

For solving corporate problems Keyware provides solution services using the latest technology and various types of packaged software implemented through a series of cycles from IT strategy planning based on the client's management strategy to IT introduction, construction, and operation.

Productivity Improvement Consulting

Keyware offers the "Productivity Improvement Consulting Service VSC," which is a method that directly removes low value-added operations from current operations and dynamically rearranges them into higher value-added operations.

ERP Solution

Keyware has a track record of numerous backbone systems centered on customers in manufacturing and processing, services, and commerce. Using optimal packages for customer operations, Keyware provides integrated services covering the width from introduction proposal to system creation and operation.

Fields of service provision

Keyware provides diverse service formats consistent with customer requirements and usage situations.

Cloud-based provision of solution packages

Keyware provides various cloud-based solutions such as the Transit Advertising System Cloud which enables the integrated management of transit advertising media and enhances operating efficiency. Compared with in-house created systems, the introduction of our solutions is possible in a short period of time and at a low cost, and enables checks on running costs.

Healthcare Solutions

Keyware offers the "Personal Health Record Solution LifeRoute" solution, which records and manages individual health information (body temperature, weight, blood pressure, number of steps, etc.), centering on local governments and companies engaged in health improvement.

Fields related to social infrastructure

Keyware provides solutions consistent with customer requirements in social infrastructure related fields such as public agencies, transportation, telecommunication, media, financial services, networks, and extraterrestrial applications.

Development of systems for revenue and fee management

Keyware's expertise in transportation operations includes fare collection, train station revenue administration, settlement with other train lines, and IC card operations, among others. Keyware has been providing a diversity of corporations with proposals for management-strategic systems based on Keyware's expertise in train-station revenue management and IC card operations.

ITS traffic management systems and traffic bureau traveler information systems

Keyware can draw on its accumulated expertise in overwhelmingly public traffic systems such as new traffic management systems and train operation information network systems. Also, Keyware has operations expertise in passengers-related information systems including train approaching status displays, destination guide displays as well as train seat reservation system.

Mass media related solutions

Keyware has expertise relevant to unusual business types and has realized systems for complex operations that fall out of the ordinary, such as the automatic allocation of newspaper adverts and the dissemination of news from reporters' handsets in the mass media industry where speed and accuracy are of the essence.

Customer management system and calculation of communication charges system for network operators

Keyware has operations expertise in areas such as communication data for fixed phones (NTT) and mobile phones, packet communication data, customer management, rate management, billing administration, collection administration, and linkage to backbone systems.

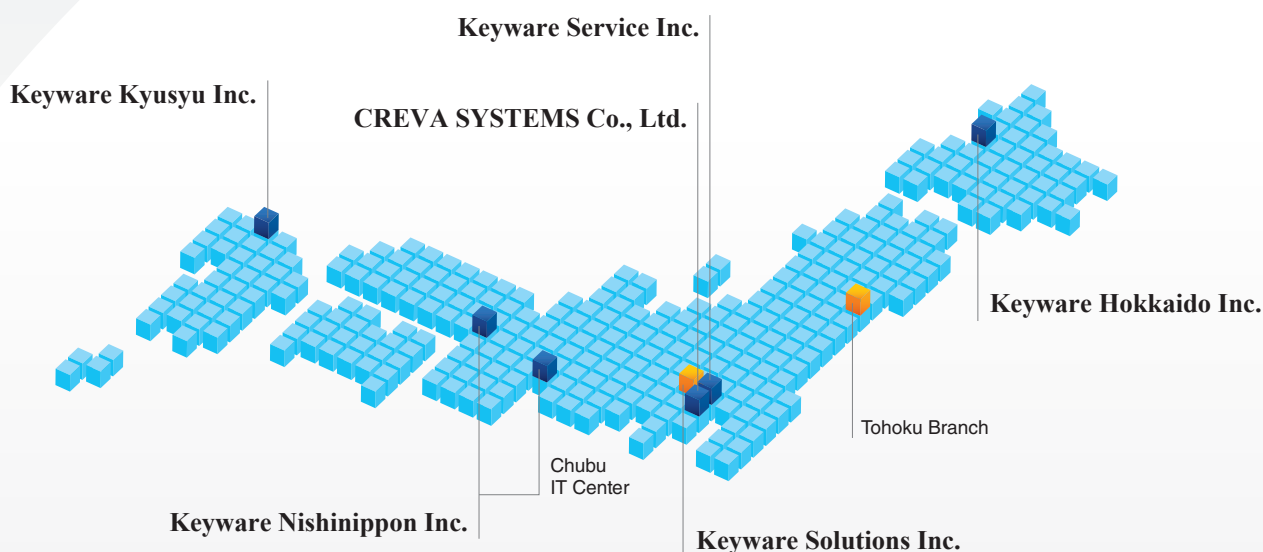
En-route Air Traffic Control (ATC) and Monitoring control management system

Keyware has been developing systems for the monitoring and control of nationwide social infrastructure networks such as rail, road, and air transportation and other types of public transportation, as well as mobile telecommunications. Keyware has been engaged in systems development to enable total status assessment, management, and the running of operations in an accurate and prompt manner while minimizing the work load on operators.

Medical Services Solutions

Based on electronic medical ordering and electronic medical record systems, Keyware offers a complete line-up ranging from the various medical services divisions (i.e., examination, nutrition, medical professions) to clinic management analysis systems, and in this way helps to speed up and raise the efficiency of hospital administration and the enhancement of hospital management.

Centered on Keyware Solutions Inc., we offer customers optimal total solutions on a nationwide scale through synergy effects that aggregate the strengths of Keyware Group companies.



Keyware Solutions Inc.

Head Office
5-37-18 Kamikitazawa, Setagaya-ku, Tokyo 156-8588, Japan
TEL: +81-3-3290-1111 (main number) FAX: +81-3-3290-6741

Tohoku Branch
Aoba-dori Plaza, 3-2-1 Chuo,
Aoba-ku, Sendai-shi, Miyagi 980-0021, Japan
TEL: +81-22-713-8191 (main number) FAX: +81-22-713-8192

Keyware Service Inc.

5-37-18, Kamikitazawa, Setagaya-ku, Tokyo 156-8588, Japan
TEL: +81-3-3290-2501 (main number) FAX: +81-3-3290-2509

Keyware Hokkaido Inc.

No.18 Marumasu Bldg., 1-1-5 Kita-7 jo-Nishi,
Kita-ku, Sapporo-shi, Hokkaido 060-0807, Japan
TEL: +81-11-757-8551 (main number) FAX: +81-11-757-2322

Keyware Nishinippon Inc.

Head Office
Sonpojapan-dosyomachi Bldg. 8F, 3-4-10 Dosyo-machi,
Chuo-ku, Osaka-shi, Osaka 541-0045, Japan
TEL: +81-6-6202-3711 (main number) FAX: +81-6-4707-3770

Chubu IT Center
Fushimidaichi Bldg., 2-9-3 Sakae, Naka-ku, Nagoya-shi, Aichi 460-0008, Japan
TEL: +81-52-220-5677 (main number) FAX: +81-52-220-5680

Keyware Kyusyu Inc.

Efu Bldg., 3-13-21 Hakataekihigashi,
Hakata-ku, Fukuoka-shi, Fukuoka 812-0013, Japan
TEL: +81-92-452-0950 (main number) FAX: +81-92-452-0953

CREVA SYSTEMS Co., Ltd.

Sanwa Bldg., 3-24-21, Shiba, Minato-ku, Tokyo 105-0014, Japan
TEL: +81-3-5443-3551 (main number) FAX: +81-3-5443-3561



Keyware Solutions Inc.

5-37-18 Kamikitazawa, Setagaya-ku, Tokyo 156-8588, Japan
TEL: +81-3-3290-1111 FAX: +81-3-3290-6741
E-mail: f-editor@keyware.co.jp

<https://www.keyware.co.jp>



Quality Management
System Registrar
JISQ9001:2015



Information Security Management
System Registrar
JISQ27001:2014



Environment Management
System Registrar
JISQ14001:2015



Privacy Mark Usage
License Business
JISQ15001:2017 compliant